



imagine taking your business to  
an expanded level

Samsung Color Laser Multi-Function Printer CLX-6200ND/6200FX/6210FX/6240FX



Samsung Original Supplies Label



Imagine expanded productivity in full color. With the CLX-6200 series color multifunction printers, your business will achieve expanded efficiency and performance. The office printer/copier/scanner is the heart of the business and the CLX-6200 series can deliver the high performance features and solutions you require, such as high speed, quality color, duplex, and convenient network security features. Let the CLX-6200 series take your business to the next level.



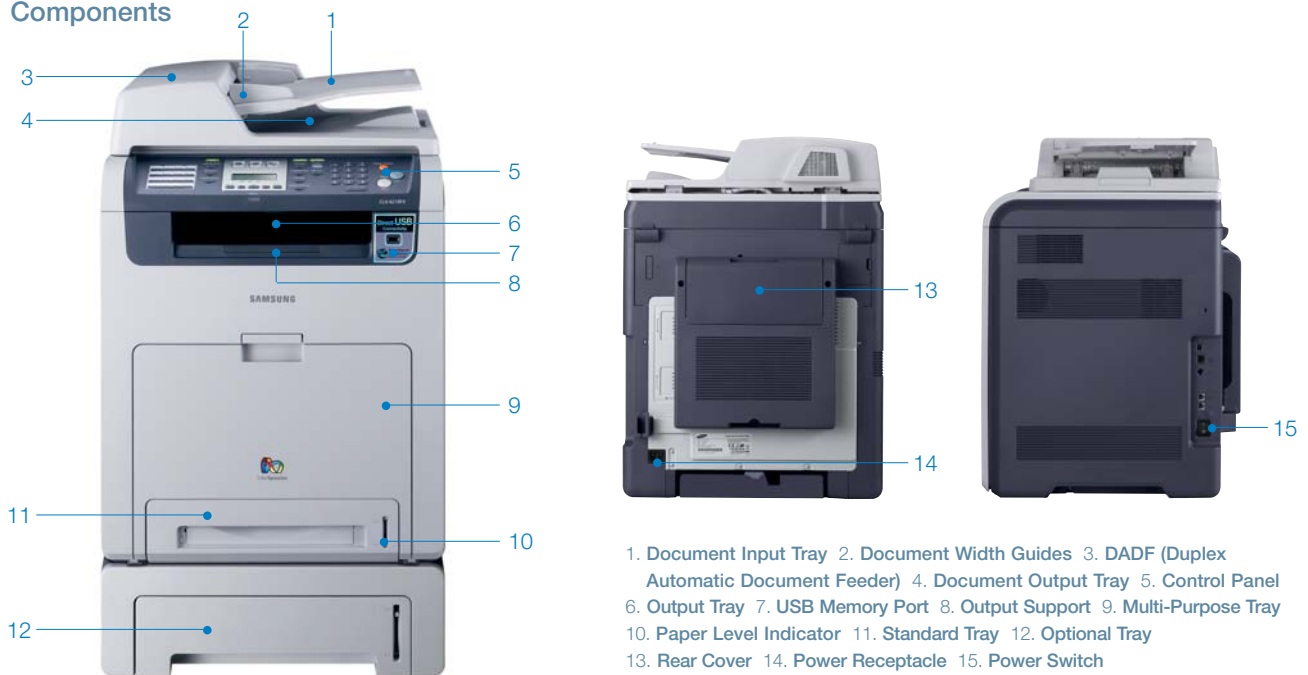
# Color Laser Multi-Function Printer

CLX-6200ND / 6200FX / 6210FX / 6240FX



Reach out and explore the possibilities! The CLX-6200 series fits naturally into your business environment and offers customization no matter how you expand your business. Designed to fit the way your business works, there are a variety of advanced features, including solutions such as open platform solution, JScribe®, and simplified connectivity to match your needs. With the Samsung's CLX-6200 series, it's not that hard to imagine.

## Components



## Control Panel Components



CLX-6200FX / 6210FX / 6240FX Control Panel

1. Speed Buttons 2. Resolution 3. Address Book 4. Redial/Pause
5. Fax 6. Copy 7. Scan/Email 8. Menu 9. OK 10. Back
11. Reduce/Enlarge 12. ID Copy 13. USB Print 14. Darkness
15. Original Type 16. Duplex 17. On Hook Dial 18. Number Keypad
19. Black 20. Stop/Clear 21. Color

CLX-6200ND Control Panel

1. Menu 2. OK 3. Back 4. Copy 5. Scan/Email 6. Darkness
7. Original Type 8. Reduce/Enlarge 9. ID Copy 10. Duplex
11. USB Print 12. Address Book 13. Number Keypad
14. Stop/Clear 15. Start (Black) 16. Start (Color)

## Series at a Glance

		CLX-6200ND	CLX-6200FX	CLX-6210FX	CLX-6240FX
<b>Speed (A4)</b>	<b>B&amp;W</b>	up to 20 ppm	up to 20 ppm	up to 20 ppm	up to 24 ppm
	<b>Color</b>	up to 20 ppm	up to 20 ppm	up to 20 ppm	up to 24 ppm
<b>Memory</b>	<b>Std.</b>	128MB	128MB	128MB	256MB
	<b>Max.</b>	384MB	384MB	384MB	768MB
<b>Duplex</b>		Built-in	Built-in	Built-in	Built-in

# Profit from cost effective and productive features

## Expand Your Efficiency with Economical Printing

### Cost Effective Printing



In today's competitive environment the pressure on bottom line performance is driving cost saving efficiency. You have to spend money to make money, but with an efficient multi-function laser printer, you will actually spend less over time. Samsung's CLX-6200 series has a low cost per page and an economical total cost of operation, resulting in long-term savings. Boost the efficiency of your business with this cost-effective laser MFP.



### Duplex Savings



Duplex printing has been made easier and convenient with both sides of the paper printed, which makes it unnecessary to manually reinsert the paper to print the other side of the paper. Another efficient plus feature is the duplex automatic document feeder that saves time as well as money. The feeder allows you to load several sheets at a time and print double-sided documents automatically. Even incoming faxes can be printed double-sided. All this eliminates the time wasted on loading each sheet and reduces the paper consumption by half. Increase efficiency and reduce expenses with the CLX-6240FX.

(CLX-6200ND, CLX-6210FX, and CLX-6240FX models feature DADF and CLX-6200FX features ADF.)



Save Time & Money!  
Duplex + ADF = DADF

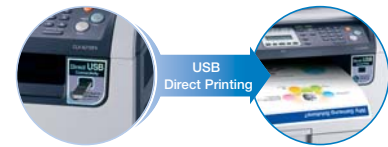


## Expand Your Connectivity with Leading Technology

### Direct USB Interface



The CLX-6200 series utilizes the latest technology to give you the greatest convenience. Equipped with a USB port on the front, you can easily access and print files stored on your USB drive. You can also scan documents and save directly them onto the USB drive. File formats supported include PDF, BMP, TIFF and JPEG. Now you no longer need to send these types of files over the network as you can conveniently print them from your USB drive while allowing others to easily print from the network.



### Convenient External Device Interface



What's even more convenient is the External Device Interface (EDI), which makes this multifunction printer compatible with other devices, such as external card readers and print logging machines. Your business will reap the benefits of the EDI and be able to perform functions like card swipe authentication, client billing, detailed reports and easy cost recovery. Simple, convenient connectivity expands your business' efficiency and connectivity.



## Expand Your Convenience with Secure, Timesaving Features

### Secure Hard Drive Features



Take advantage of the 80 GB hard drive\* and increase your ability to manage and monitor print jobs on the network. Using the simple interface, print jobs can be monitored and controlled from anywhere on the network. You can also increase security and confidentiality for print jobs when they are stored on the MFP's hard drive and delay job printing until you are available to retrieve them. In addition, by accessing the Forms Overlay feature, forms can also be stored on the hard drive for future use, making it easier to create a variety of documents. Increase your potential with secure, timesaving features from Samsung. (\*Standard on the CLX-6240FX and optional on the CLX-6200ND and CLX-6210FX.)

### Wireless Network



Broaden the capabilities of your multifunction laser printer with a wireless network. This allows you to connect without the need to restrict its workplace location due to hard wire cabling availability. Expand the network by connecting everyone and print from any location, simply and wirelessly.

(Optional on the CLX-6200ND, CLX-6210FX, and CLX-6240FX)

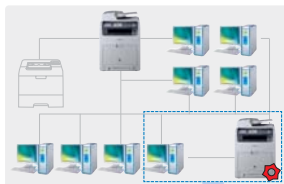
# Benefit from printing solutions

## Device Management Solution

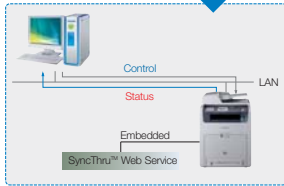
### SyncThru™ Web Service

Manage printers and MFPs, reduce the support burden and maximize productivity with Samsung's feature rich SyncThru™ Web Service and SyncThru™ Web Admin Service remote management solutions.

SyncThru™ Web Service is an embedded web server that allows users to control Samsung printers and MFPs across the network through any standard web browser without additional software installation. This is a device management solution which provides the ability to configure and monitor a single network printer or MFP remotely.



Office Environment



How SyncThru™ Web Service Operates



Screenshot of Web Browser

#### Features

- Remotely configure and monitor network printer through web browser
- Print out various reports on network printer
- Upgrade printer and network card firmware

#### Benefits

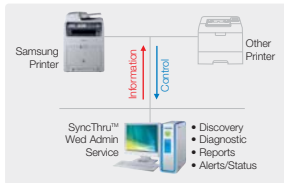
- Effective monitoring tool for general users and IT administrator
- Easy to access and operate without additional software installation
- Convenient network and device configuration

### SyncThru™ Web Admin Service

SyncThru™ Web Admin Service is a web-based fleet management solution that allows IT professionals to manage the network without leaving their desks. Configure printers, check device status, perform remote diagnostics, receive alerts when possible problems occur and change settings securely from a remote location.



Office Environment of Corporate



How SyncThru™ Web Admin Service Operates



Centralized remote Control for Devices

#### Features

- Fleet management for multiple network printers
- Provide device discovery
- Configure and monitor network printers remotely
- Automated firmware upgrade
- Provide useful features related to a variety of software plug-ins
- Report generator for usage metering of groups or users

#### Benefits

- Time and cost saving management tool for corporate customers
- Enhance productivity of device management
- Easy to install, access and operate
- Powerfully centralized tool for IT administrators with appropriate functions
- Easy to extend function range on demand by adding software plug-ins

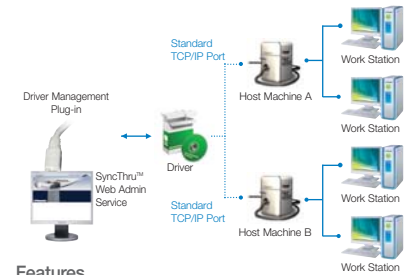
## Device Management Solution

### SyncThru™ Web Admin Service Plug-Ins

By adding plug-ins to SyncThru™ Web Admin Service Core, IT managers can enjoy a more powerful management tool for remote device management including non-network printers.

#### Driver Management Plug-in\*

SyncThru™ installs driver and manages network printers.



#### Features

- Monitor availability of new driver versions for Samsung network printers and MFPs
- Download new version and store them in Driver Management Plug-in database
- Install printer drivers in remote computers
- Configure printer drivers remotely on users' computers
- Delete printer drivers from remote locations

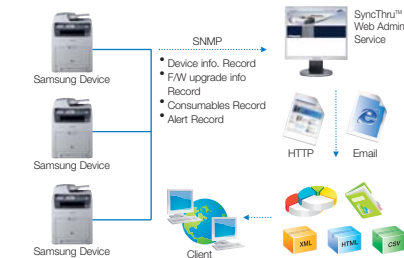
#### Benefits

- Convenient tool for administrator
- Drivers can be easily managed remotely so that IT managers can perfectly control the output environment
- Strong control for driver management

#### Report Generator Plug-In

SyncThru™ manages information and assists in generating reports.

Customer's Local Network



#### Features

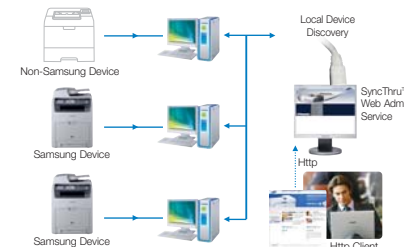
- Create reports in various formats
- Create reports in chart formats
- Generate periodical and summary reports
- XML, HTML and CSV format supported
- Status, usage data, alert history, accounting details and consumables information reported

#### Benefits

- Easy to view and manage at a glance

#### Local Device Discovery Plug-In\*

SyncThru™ detects and manages non-network printers.



#### Features

- Discover devices which are connected to client machine via USB or LPT interface
- Provide discovery scheduling
- Provide detailed information about devices
- Group the devices and manage groups

#### Benefits

- Easy to install: No technical knowledge is required other than for driver installation
- Easy to operate: Software designed for ease of use
- Easy to manage locally connected printers and MFPs

\* Domain Environment needed

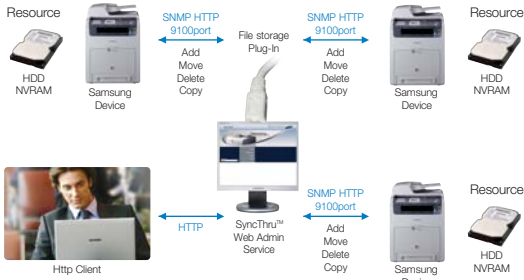
# Benefit from printing solutions

## Device Management Solution

### SyncThru™ Web Admin Service Plug-Ins

#### File Storage Plug-In \*

SyncThru™ manages files such as fonts, forms, and macros on devices with storage.



#### Features

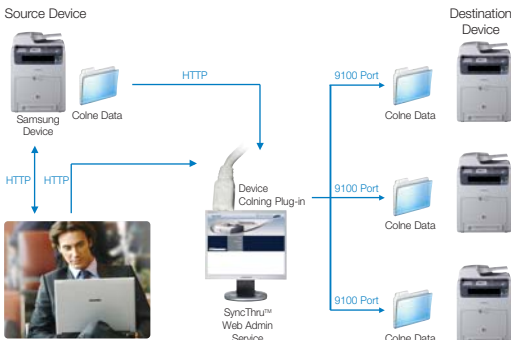
- Provides add, copy, move, and delete functionalities for managing files on the devices.
- Provides a list of files that reside on the devices.
- Manage files fonts, macros, and forms stored on the Samsung devices.

#### Benefits

- Enable to use the company specific fonts, logo, barcode, and forms securely without complex program commands.

#### Device Cloning Plug-In \*

SyncThru™ saves and uploads device settings from one device to other devices.



#### Features

- Create one configuration file from one specified device and save it.
- Copy the configuration file to other devices.
- Provides cloning results.

#### Benefits

- Reduce the administrator's effort to configure the same device.

\* HDD needed.

### Smart Panel

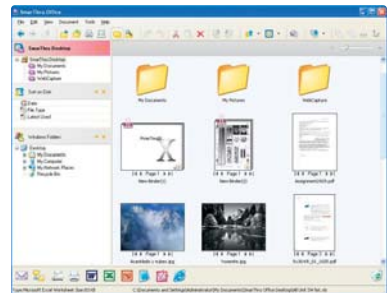
Samsung's Smart Panel monitors each printer's status and informs the user if there is a problem or concern. If a problem occurs, the Solution animation pops up to give assistance. In addition to troubleshooting, Smart Panel allows the user to manage toner levels, buy toner online (available in limited countries) and configure printer settings conveniently.



## Document Management Solution

### SmarThru™ Office

Samsung's™ Office is a full-featured solution that provides not only the tools necessary for scanning documents, but also the tools the modern office needs for their document management. These include text recognition, copying, printing, faxing and emailing, editing and binding, as well as storage, backup and searching functions.



#### Features

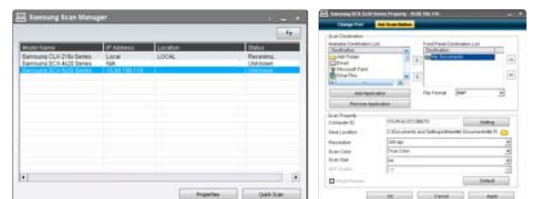
- Personal document management, Desktop and view, Internet Explorer capture or search
- Network scanner support
- Automatic sorting, binding, backup, audit trail, arrangement, and extraction
- Drag & drop to Email and fax
- Expanded PDF support
- Convenient Desktop and view functions
- Web capture, folder monitoring, property searching, subject and keyword search functions

#### Benefits

- Enhanced efficiency of document management
- Streamlines document delivery process

### Scan Manager

Scan Manager provides information and status for installed scan drivers, also user can change scan properties and directly scan (Quick Scan) for the select device. It also supports USB and network scan driver and the user can easily configure & change the scan button setting.



#### Features

- User can change scan properties and directly scan for the select device.
- Quick Scan provide scanning function directly by Twain driver.
- Customizable Scan-To-PC option (Resolution, File Format, Scan Size, Scan Color)
- Secured network connection with password protection.

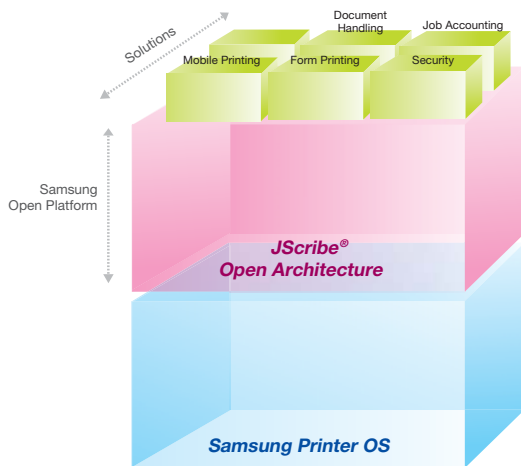
#### Benefits

- Easy to configure the scan option in the network environment.

# Open Platform Solution

## JScripte® Embedded Technology\*

JScripte® easily enables the user to integrate the business environment with Samsung Printer or Samsung Multi-Function Device. It is an embedded JavaScript based open platform which provides a quick and portable method to control the device and to manipulate the print and image data.



### Features

- Embedded Application and Communication Platform
- Full control of All Device Functions using Open API
- Applicable for all JScripte® Enabled device (Printer, MFP)
- Flexible Panel Customization
- Full Access to Incoming Data

### Benefits

Enables user to integrate their printer or MFP into the business environment easily without changing the firmware.  
User can select and use various 3rd Party JScripte®-based solutions (Security, Form Printing, Mobile Printing, Document Handling, Job Accounting) for the business need.

# Consumable Management Solution

## i-ATOS

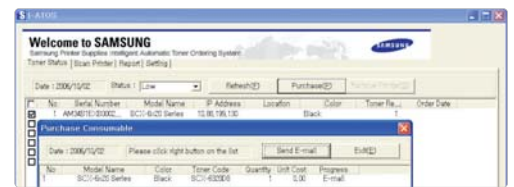
i-ATOS is an automatic toner ordering solution which monitors toner status, provides pop-up alerts, and Emails IT manager when toner is under a specified level (10% or 20%). IT manager can search low toner information and initiate the toner ordering process automatically.

### Features

- Monitor toner status in real-time
- Automatic pop-up messaging and Email alerts which indicates the toner is below a certain level (5%-20%)
- Administrator can search low toner information, and set the toner ordering process automatically

### Benefits

- Intelligent toner management enables users to produce documents with consistent quality
- Reduces machine down-time due to supply shortages and also reduces subsequent disruption to the workflow in the organization
- Reduces the number of interventions required from administrators



Click the button "Order"



\* HDD needed.

# Specifications

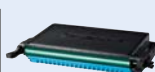
	CLX-6200ND	CLX-6200FX	CLX-6210FX	CLX-6240FX
<b>Print</b> Speed (Mono) Speed (Color) First Print Out Time (Mono) First Print Out Time (Color) Resolution Emulation Duplex	Up to 20 ppm in A4 (21 ppm in Letter) Up to 20 ppm in A4 (21 ppm in Letter) Less than 25 seconds (From Ready Mode) Less than 25 seconds (From Ready Mode) Up to 2,400 x 600 dpi effective output PostScript3, PCL5c, PCL6, SPL-C (Samsung Printer Language Color) BUILT-IN	Up to 20 ppm in A4 (21 ppm in Letter) Up to 20 ppm in A4 (21 ppm in Letter) Less than 25 seconds (From Ready Mode) Less than 25 seconds (From Ready Mode) Up to 2,400 x 600 dpi effective output PostScript 3, PCL5c, PCL 6, SPL-C (Samsung Printer Language Color) BUILT-IN	Up to 20 ppm in A4 (21 ppm in Letter) Up to 20 ppm in A4 (21 ppm in Letter) Less than 25 seconds (From Ready Mode) Less than 25 seconds (From Ready Mode) Up to 2,400 x 600 dpi effective output PostScript3, PCL5c, PCL6, SPL-C (Samsung Printer Language Color) BUILT-IN	Up to 24 ppm in A4 (25 ppm in Letter) Up to 24 ppm in A4 (25 ppm in Letter) Less than 19 seconds (From Ready Mode) Less than 19 seconds (From Ready Mode) Up to 2,400 x 600 dpi effective output PostScript3, PCL5c, PCL6, SPL-C (Samsung Printer Language Color) BUILT-IN
<b>Copy</b> Speed(Mono) Speed(Color) Resolution First Copy Out Time (Mono) First Copy Out Time (Color) Zoom Rate Multy Copy Duplex Copy Copy Features	Up to 20 cpm in A4 (21 cpm in Letter) Up to 20 cpm in A4 (21 cpm in Letter) Up to 1,200 x 1,200 dpi 25 seconds 28 seconds 25~400% (Platen), 25~100% (ADF) 1 ~ 99 BUILT-IN ID Copy, Clone Copy, N-up Copy, Poster Copy	Up to 20 cpm in A4 (21 cpm in Letter) Up to 20 cpm in A4 (21 cpm in Letter) Up to 1,200 x 1,200 dpi 25 seconds 28 seconds 25~400% (Platen), 25~100% (ADF) 1 ~ 99 N/A ID Copy, Clone Copy, N-up Copy, Poster Copy	Up to 20 cpm in A4 (21 cpm in Letter) Up to 20 cpm in A4 (21 cpm in Letter) Up to 1,200 x 1,200 dpi 25 seconds 28 seconds 25~400% (Platen), 25~100% (ADF) 1 ~ 99 BUILT-IN ID Copy, Clone Copy, N-up Copy, Poster Copy	Up to 24 cpm in A4 (25 cpm in Letter) Up to 24 cpm in A4 (25 cpm in Letter) Up to 1,200 x 1,200 dpi 20 seconds 23 seconds 25~400% (Platen), 25~100% (ADF) 1 ~ 99 BUILT-IN ID Copy, Clone Copy, N-up Copy, Poster Copy
<b>Scan</b> Compatibility Method Resolution (Optical) Resolution (Enhanced) Scan to	TWAIN Standard, WIA Standard (Windows XP only) Color Flatbed Scanner or DADF Up to 600 x 1,200 dpi Up to 4,800 x 4,800 dpi USB/SMB/FTP/Network/Email	TWAIN Standard, WIA Standard (Windows XP only) Color Flatbed Scanner or DADF Up to 600 x 1,200 dpi Up to 4,800 x 4,800 dpi USB/SMB/FTP/Network/Email	TWAIN Standard, WIA Standard (Windows XP only) Color Flatbed Scanner or DADF Up to 600 x 1,200 dpi Up to 4,800 x 4,800 dpi USB/SMB/FTP/Network/Email	TWAIN Standard, WIA Standard (Windows XP only) Color Flatbed Scanner or DADF Up to 600 x 1,200 dpi Up to 4,800 x 4,800 dpi USB/SMB/FTP/Network/Email
<b>Fax</b> Compatibility Modern speed Resolution Memory Auto Dial Fax Feature	N/A N/A N/A N/A N/A N/A	ITU-T G3 33.6Kbps Up to 300 x 300 dpi (B/W), 200 x 200 dpi (Color) 4 MB Yes Color Fax, PC-Fax (Mono Send Only, included in SmarThru™ Office)	ITU-T G3 33.6Kbps Up to 300 x 300 dpi (B/W), 200 x 200 dpi (Color) 4 MB Yes Color Fax, PC-Fax (Mono Send Only, included in SmarThru™ Office)	ITU-T G3 33.6Kbps Up to 300 x 300 dpi (B/W), 200 x 200 dpi (Color) 4 MB Yes Color Fax, PC-Fax (Mono Send Only, included in SmarThru™ Office)
<b>Paper Handling</b> Input Capacity and Types Output Capacity and Types Media Size Media Type ADF Capacity ADF Document Size	250-sheet Cassette, 100-sheet Multi-Purpose Tray Up to 170-sheet Face Down 76 x 127 mm (3" x 5") ~ 216 x 356 mm (8.5" x 14") Envelopes, Labels, Card Stock, Bond, Archive 50-sheet Width : 142 ~ 216mm (5.6"~8.5"), Length : 148 ~ 356mm (5.8" ~ 14")	250-sheet Cassette, 100-sheet Multi-Purpose Tray Up to 170-sheet Face Down 76 x 127 mm (3" x 5") ~ 216 x 356 mm (8.5" x 14") Envelopes, Labels, Card Stock, Bond, Archive 50-sheet Width : 142 ~ 216mm (5.6"~8.5"), Length : 148 ~ 356mm (5.8" ~ 14")	250-sheet Cassette, 100-sheet Multi-Purpose Tray Up to 170-sheet Face Down 76 x 127 mm (3" x 5") ~ 216 x 356 mm (8.5" x 14") Envelopes, Labels, Card Stock, Bond, Archive 50-sheet Width : 142 ~ 216mm (5.6"~8.5"), Length : 148 ~ 356mm (5.8" ~ 14")	250-sheet Cassette, 100-sheet Multi-Purpose Tray Up to 170-sheet Face Down 76 x 127 mm (3" x 5") ~ 216 x 356 mm (8.5" x 14") Envelopes, Labels, Card Stock, Bond, Archive 50-sheet Width : 142 ~ 216mm (5.6"~8.5"), Length : 148 ~ 356mm (5.8" ~ 14")
<b>General</b> LCD Memory / Storage OS Compatibility Interface Noise Level Duty Cycle, Monthly Dimension (W x D x H) Weight	2-Line LCD 128 MB (Max. 384 MB) Windows 2000/XP/2003/Vista, Various Linux OS, Mac OS X 10.3~10.5 Hi-Speed USB 2.0, Ethernet 10/100Base-TX USB host 2.0 (Scan to USB, USB print) Less than 53 dBA (Printing) Less than 54 dBA (Copying) Less than 32 dBA (Standby) Up to 65,000 pages 468 x 498 x 651 mm (18.4" x 19.6" x 25.6") 36kg (79.4lb)	2-Line LCD 128 MB (Max. 384 MB) Windows 2000/XP/2003/Vista, Various Linux OS, Mac OS X 10.3~10.5 Hi-Speed USB 2.0, Ethernet 10/100 Base-TX USB host 2.0 (Scan to USB, USB print) Less than 53 dBA (Printing) Less than 54 dBA (Copying) Less than 32 dBA (Standby) Up to 65,000 pages 468 x 498 x 645 mm (18.4" x 19.6" x 25.4") 35 kg (77.2 lbs)	2-Line LCD 128 MB (Max. 384 MB) Windows 2000/XP/2003/Vista, Various Linux OS, Mac OS X 10.3~10.5 Hi-Speed USB 2.0, Ethernet 10/100Base-TX USB host 2.0 (Scan to USB, USB print) Less than 53 dBA (Printing) Less than 54 dBA (Copying) Less than 32 dBA (Standby) Up to 65,000 pages 468 x 498 x 651 mm (18.4" x 19.6" x 25.6") 36kg (79.4lb)	2-Line LCD 256 MB (Max. 768 MB) , 80 GB HDD Windows 2000/XP/2003/Vista, Various Linux OS, Mac OS X 10.3~10.5 Hi-Speed USB 2.0, Ethernet 10/100Base-TX USB host 2.0 (Scan to USB, USB print) EDI (External Device Interface - USB Host Type) Less than 54 dBA (Printing) Less than 55 dBA (Copying) Less than 32 dBA (Standby) Up to 80,000 pages 468 x 498 x 651 mm (18.4" x 19.6" x 25.6") 37kg (81.6lb)

# Supplies and Options

<b>Black Toner Cartridge</b>	Average Continuous Black Cartridge Yield • High Yield : 5,500 standard pages / • Standard Yield : 2,500 standard pages (ships with 2,500 pages Standard Toner Cartridge) * Declared yield value in accordance with ISO/IEC 19798			Average Continuous Black Cartridge Yield • High Yield : 5,500 standard pages / • Standard Yield : 2,500 standard pages (ships with 5,500 pages Toner Cartridge) * Declared yield value in accordance with ISO/IEC 19798
<b>Yellow/Magenta/ Cyan Toner Cartridge</b>	Average Continuous Yellow/Magenta/Cyan Cartridge Yield • High Yield : 5,000 standard pages / • Standard Yield : 2,000 standard pages (ships with 2,000 pages standard Toner Cartridge) * Declared yield value in accordance with ISO/IEC 19798			Average Continuous Yellow/Magenta/Cyan Cartridge Yield • High Yield : 5,000 standard pages / • Standard Yield : 2,000 standard pages (ships with 5,000 pages Toner Cartridge) * Declared yield value in accordance with ISO/IEC 19798
<b>Transfer Belt Options</b>	Approx. 50,000 pages			
	128MB Memory : CLP-MEM201 256MB Memory : CLP-MEM202 Second Cassette Feeder : CLX-S6240A Wireless Network Card (802.11 b/g) : ML-NWA10L 80 GB Hard Disk : CLX-HDK410	128MB Memory : CLP-MEM201 256MB Memory : CLP-MEM202 Second Cassette Feeder : CLX-S6240A	128MB Memory : CLP-MEM201 256MB Memory : CLP-MEM202 Second Cassette Feeder : CLX-S6240A Wireless Network Card (802.11 b/g) : ML-NWA10L 80 GB Hard Disk : CLX-HDK410	128MB Memory : CLP-MEM101 256MB Memory : CLP-MEM102 512MB Memory : CLP-MEM103 Second Cassette Feeder : CLX-S6240A Wireless Network Card (802.11 b/g) : ML-NWA10L



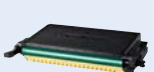
Black Toner Cartridge



Cyan Toner Cartridge



Magenta Toner Cartridge



Yellow Toner Cartridge



Paper Transfer Belt



Second Cassette Feeder



128/256/512MB Memory



80GB Hard Disk



Wireless Network Card

Distributed by

Design and Specifications are subject to change without notice.  
Trademarks of other companies mentioned in these publications are hereby recognised and acknowledged.